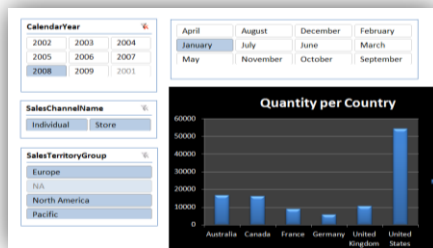


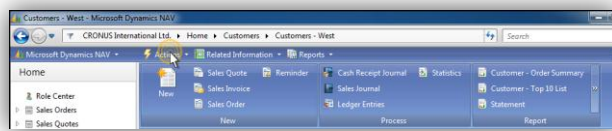
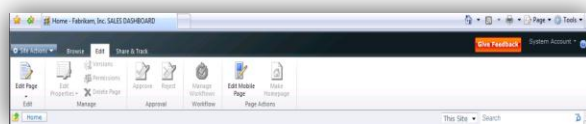


Productive People, Simplified Processes, Connected Ecosystems

Microsoft Dynamics and the Microsoft business productivity infrastructure



New features in Microsoft Excel 2010 help employees analyze and visualize business data to answer questions, discover insights, and ultimately make better-informed decisions.



Customizable Ribbons in Microsoft SharePoint Server 2010 and Microsoft Dynamics ERP solutions expose actions relevant to a role or process, reducing the need for training and support—even for casual and inexperienced users.

“Dynamic business” describes organizations that have the ability to continuously evolve and transform in response to economic, operational, and organizational challenges. The goal of Microsoft Dynamics® business management solutions is to help companies become dynamic businesses by empowering their people to be more productive, by simplifying business processes, and by enabling seamless connections with customers, partners, and suppliers.

Achieving this transformation requires an IT infrastructure that can streamline the flow of information from line-of-business solutions to the desktops, browsers, and mobile devices of all employees who interact with customers, manage internal processes, and make decisions that drive the business forward.

Microsoft Dynamics solutions are built to work with other Microsoft® products and technologies, including Microsoft Office 2010 and Microsoft SharePoint® Server 2010, the business productivity software that hundreds of millions of information workers use every day.

Deployed alongside this business productivity infrastructure, Microsoft Dynamics enterprise resource planning (ERP) and customer relationship management (CRM) solutions can improve collaboration, communication, insights, and productivity across the company.

By taking advantage of new features in Microsoft Office 2010 and SharePoint Server 2010, organizations can derive more value from their investments in Microsoft Dynamics technology, helping them move closer to becoming a dynamic business.

Empower People

The latest release of the business productivity infrastructure from Microsoft empowers employees to gain greater insights into their business by using tools with which they're already familiar. For example:

- Microsoft Office 2010 and SharePoint Server 2010 work together to solve information overload through rich visualization of business data from Microsoft Dynamics applications.
- PowerPivot for Microsoft Excel® 2010 and SharePoint Server 2010 puts unmatched computational power into the hands of end users to perform self-service business intelligence.
- Microsoft Office Web Applications make it easier than ever for employees to access critical business information anywhere, anytime, from a PC, phone, or browser.
- The new business productivity infrastructure incorporates social networking and advanced search features and technologies for connecting people to customers, colleagues, and information.

Simplify Processes

By adopting Microsoft Office 2010 and SharePoint Server 2010, companies that use Microsoft Dynamics applications can reap significant gains in business process efficiency. For example:

- New coauthoring features in Microsoft Word 2010 and Microsoft PowerPoint® 2010 reduce duplication of effort and help employees complete collaborative tasks and complex business processes faster.
- New features in Microsoft Outlook® 2010, such as Mail Tips and Quick Steps, help employees to gain more control over their e-mail, and thereby focus on their most important tasks while removing distractions.
- External Lists and External List Folders in SharePoint Server 2010 and Outlook 2010 can make information stored in Microsoft Dynamics business solutions more readily available to employees.
- New features of SharePoint Server 2010 can make Microsoft Dynamics ERP and CRM data accessible to more people across the organization. The customizable Microsoft Office Fluent™ user interface exposes only the tasks and actions relevant to a person's role or a specific business processes, so casual and inexperienced users require less training to complete their work.

Connect Ecosystems

Along with Microsoft Dynamics ERP and CRM solutions, Microsoft Office 2010 and SharePoint Server 2010 can enable companies to connect more closely with customers, partners, and suppliers. For example:

- Business Connectivity Services in SharePoint Server 2010 provide enhanced extranet capabilities so that customers and suppliers can be given secure access to view and update their data stored in Microsoft Dynamics ERP and CRM applications through a Web browser.
- Reach people immediately outside your company's firewall with Microsoft Office Communications Server 2007 R2, which can provide visibility into a person's availability whether or not they are part of your company. Furthermore, instant messages and e-mail can be sent, or a phone call can be initiated with external parties via a single click.

For more information about Microsoft Dynamics, visit www.microsoft.com/dynamics.